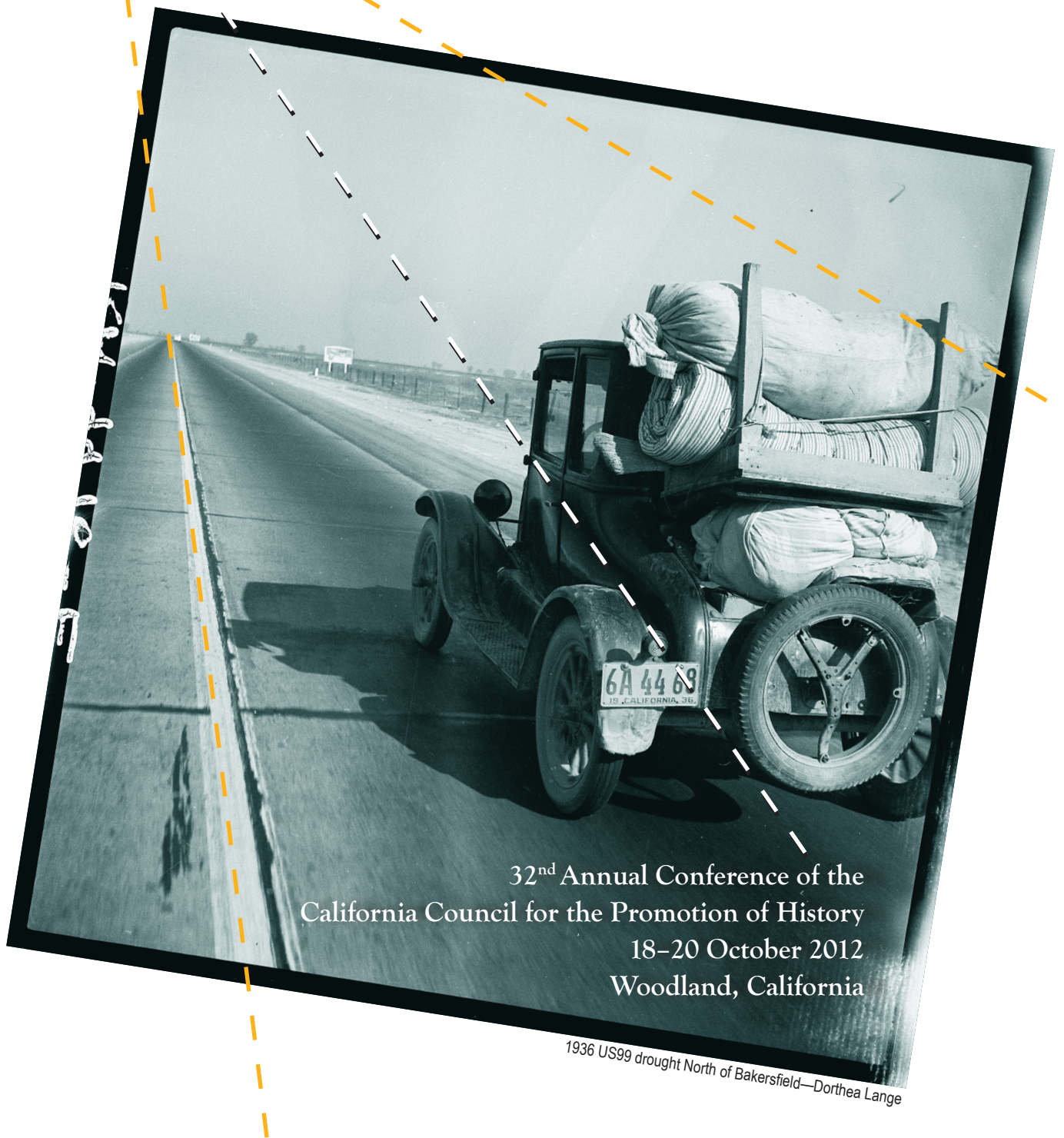


# California

## On the Move



32<sup>nd</sup> Annual Conference of the  
California Council for the Promotion of History  
18–20 October 2012  
Woodland, California

1936 US99 drought North of Bakersfield—Dorthea Lange



# Welcome to Woodland!

Join us in Woodland as CCPH explores California on the Move. Our state has always been a land of movement—from native peoples, to explorers and settlers, to promoters and exploiters. Shifts and changes in land and water, migration of flora and fauna, and waves of social movements have all shaped California, and the City of Woodland has been witness to much of this evolution. Welcome and thank you for coming along for the ride!

The Historic Hotel Woodland was originally designed by prominent Bay Area architect W.H. Weeks in 1928. For decades, the hotel provided luxury accommodations to visitors and commercial businesses. In 1997, a group of local business people orchestrated the renovation of the landmark hotel, restoring its Spanish Colonial Revival Architecture through painstaking preservation, for which the group was awarded recognition from then

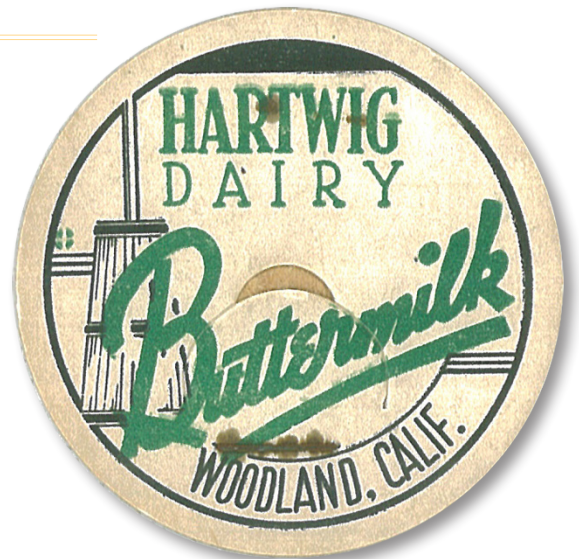
Governor Pete Wilson for their steadfast commitment to Downtown Revitalization. The unique architecture, artwork, sculpture, alcoves, shaded patio and graceful fountain were meticulously preserved, returning the building to its original grandeur. A multitude of original, hand-painted wooden stencil designs adorn the ceilings and beams, as evidence to the 1,185 days and 7.5 million dollars spent on reconstruction and modernization. Hotel Woodland has been a favorite event venue for thousands of meetings and special events for more than a decade. We know you will enjoy the personality of Historic Hotel Woodland and its old-time elegance as the site of all our conference sessions.

---

## A Special for New Members

In conjunction with this year's annual conference in Woodland, CCPH is offering residents of Yolo and neighboring counties who are new to CCPH a half-price, one-year membership with conference registration. Residents of Colusa, Sutter, Sacramento, Solano, Napa, and Lake counties qualify for this opportunity to become involved in California's leading, statewide public history advocacy organization.

If you are eligible for this offer, please be sure to include your county of residence on the membership application form you include with your registration materials.



---

## What is CCPH?

Since our founding in 1977, the California Council for the Promotion of History has been the leading statewide advocate for California history, and an effective networking organization for all of California's public historians, both professional and avocational. CCPH provides an open and collegial forum where historians, curators, archaeologists, interpreters, archivists, librarians, cultural resource managers, historical organization officers, teachers, and other historically-minded members of the community can

exchange ideas and find common ground. Our diverse and dynamic members are what make CCPH an effective voice for our state's history and heritage. CCPH provides leadership through a broad range of efforts, including our quarterly newsletter, California History Action; statewide awards; mini-grants to organizations and individuals; a Directory of Professional Historians; legislation monitoring and advocacy; and through our annual conference. If you are not already a member, please join us.

# Conference at a Glance

## Thursday, October 18

- 11:00 a.m.-3:00 p.m.      **CCPH Board Meeting** Best Western Shadow Inn, 584 East Street, Woodland
- 1:00-5:00 p.m.          **Workshop:** *Taking History to the Streets*
- 2:00-8:00 p.m.          **Registration**, Lobby of Best Western Shadow Inn, Woodland
- 5:00-8:00 p.m.          **Opening Reception** Gibson House, 512 Gibson Road, Woodland

## Friday, October 19

- 8:30-10:00 a.m.          **Plenary:** *Why Don't We Do It in the Road? Curating California in Public*, Hotel Woodland
- 10:00 a.m.-5:30 p.m.      **Registration**, 436 Main Street, Hotel Woodland
- 10:15-11:45 a.m.          **Session 1: Autoclub of California Presents**
- 10:15-11:45 a.m.          **Session 2: California Social Movements: Different Perspectives**
- 11:45 a.m. -1:15 p.m.      **Lunch on your own** - Downtown
- 1:30-3:00 p.m.              **Session 3: Building Roads in California's Parks and Forests**
- 1:30-3:00 p.m.              **Session 4: Our Journeys: The First Families, West Sacramento Historical Society**
- 3:15-4:45 p.m.              **Session 5: Conflict and Resolution in California Labor History**
- 3:15-4:45 p.m.              **Session 6: The Common Core Standards & History's Reemergence in School Curriculum**
- 6:30-9:00 p.m.              **Banquet:** *Envisioning California's Delta As It Was: Making History Matter for the Present and Future*

## Saturday, October 20

- 8:00 a.m.-12:00              **Registration**, Hotel Woodland
- 8:15-9:45 a.m.              **Session 7: Pushing the Envelope: Technology Advances in California**
- 8:15-9:45 a.m.              **Session 8: Real World Cultural Resources Situations**
- 10:00-11:30 a.m.              **Session 9: Shaping the Bay Area in the 20th Century**
- 10:00-11:30 a.m.              **Session 10: Education, Interpretation, and Memory**
- 11:45 a.m.-1:15 p.m.        **Awards Luncheon**
- 1:30-3:00 p.m.              **Session 11: To California via Trains, Trails, and Ships**
- 1:30-3:00 p.m.              **Session 12: Currents in California Water History**
- 3:15-4:45 p.m.              **Session 13: Big Ideas: A Century of California Highways**
- 3:15-4:45 p.m.              **Session 14: Seeking Suffrage and Syncretism**

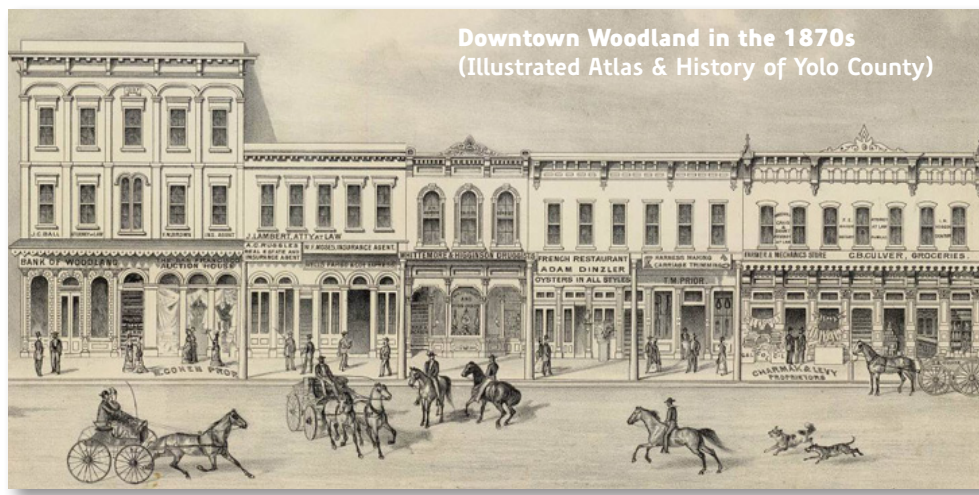
# Why Don't We Do It in the Road?

## Curating California in Public

CCPH Plenary

The leadership of the American Historical Association is bringing attention of their membership back to public history. History departments around the country, including the department at Stanford, are renewing their efforts to train students for fulfilling careers in public history. And CCPH itself boasts a membership of multi-disciplinary, public historians invested in the value of moving the fields forward.

The Plenary Session of the 32nd Annual CCPH conference will examine this recent renaissance of public history—the history practiced by museums, libraries, archives, nonprofit organizations, public agencies, the media, web sites, bloggers, independent scholars, and self-described unsupervised historians. Jon Christensen and Anthea Hartig will start with their most recent experiences fostering public engagement in history at the Bill Lane Center for the American West and the California Historical Society. From there, they will encourage conference attendees to engage with them in a lively discussion about the futures, possibilities, and responsibilities of public historians in the evolution of our disciplines.



## CCPH Conference Plenary Speakers

### Jon Christensen

Executive Director, Bill Lane Center for the American West, Stanford University; History Department, UCLA

Jon Christensen just finished a three-year stint as Executive Director of the Bill Lane Center for the American West at Stanford University, and this fall is taking up a joint appointment in the History Department and the Institute of the Environment and Sustainability at the University of California, Los Angeles. Jon was an environmental journalist and science writer for 20 years before coming to Stanford in 2002-2003 as a Knight Journalism Fellow. His work has appeared in *The New York Times*, *Nature*, *High Country News*, and many other newspapers, magazines, journals, and radio and television shows.

Jon was a Steinbeck Fellow at San Jose State University in 2003-2004, before returning to Stanford to work on a Ph.D. in History. He is finishing a book entitled "Critical Habitat: A History of Thinking with Things in Nature," and is organizing a large collaborative project to crowd-source a new, public environmental history of the Bay Area with libraries, museums, archives, nonprofit organizations, scholars, researchers, the media, and the public during the Year of Bay in 2013.

### Anthea M. Hartig, Ph.D.

Executive Director, California Historical Society

Anthea M. Hartig comes to the California Historical Society from the National Trust for Historic Preservation, where she directed the Trust's Western Office and served the six continental far western states along with Hawai'i, Alaska and the Pacific Island Territories of Guam and Micronesia. Dr. Hartig taught history and cultural studies at La Sierra University in Riverside and graduate courses in historic preservation at the University of California, Riverside.

Dr. Hartig's interest in the relevance of California's stories and places define her professional and advocacy life. She served as a municipal preservation planner for over a decade, and owned a cultural resources consulting firm. She has served on many boards of directors, including the California Preservation Foundation and the California Council for the Promotion of History, and has published in academic and professional journals.

Last year Dr. Hartig was honored with the 2011 California Preservationist of the Year award at the 36th annual California Preservation Conference.

## Workshop: Taking History to the Streets

How do you engage the community through stories? This hands-on, interactive workshop will guide you through the steps it takes to plan, fund, produce, and promote a “street-based” history project in your community.

We will showcase successful programs all around the country—If This House Could Talk, Five-Blocks Square, Century Homes Alberta—and discuss Main Street historical streetscape projects, living history walking tours, and more. A series of 20-minute mini-workshops and a “Taking

History to the Streets ToolKit” will provide all the tools you need to plan and fund similar projects. The workshops take a “train the trainer” approach for how to research an individual, structure, street, or neighborhood, as well as how to use traditional and social media for education and advocacy.

Workshop leaders are Maryellen Burns, Janice Kelley, Kelly Woodward, and David Wilkinson.

## Our Opening Reception Will be at Woodland's Historic Gibson House

The Yolo County Historical Museum operates the beautifully maintained Gibson House and grounds at 512 Gibson Road, which preserve a typical Yolo County rural home from the nineteenth century. It is listed in the National Register of Historic Places.

The mansion is located on two-and-a-half acres of towering trees and historical landscaping. The buildings include the two-story main house with eleven rooms; outbuildings with a root cellar and a dairy display; a laundry display; garden maintenance and supplies; a garage used for storage; a barn with antique wagon; a blacksmith shop; and cottage.

The Gibson House is the only historic home in Yolo County open to the public. The main themes of the museum are the establishment and development of farming and ranching in Yolo County, as shown through the life and work of William Byas Gibson and his family.

Adapted from the Gibson House website, <http://www.gibsonhouse.org/>



## Envisioning California's Delta As It Was: Making History Matter for the Present and Future

CCPH Banquet Speaker Jon Christensen, 6:30 p.m. Hotel Woodland

Jon Christensen will speak about an interactive visualization of the history of the California Delta—a public history effort focused on engaging non-specialists in the history of this special region of the state. As Jon put it: “What is really interesting about this project and made it a great success is that this was truly a collaboration between scholars, scientists, and journalists to create a powerful interactive public history project in the media on an important subject of current public concern.” This is a collaboration between his organization, the Bill Lane

Center for the American West, KQED’s Quest program, and the San Francisco Estuary Institute. The website features historical documents, maps, and photos that highlight the dramatic changes the Delta has undergone since the early nineteenth century. For those who would like a sneak-peek: [science.kqed.org/quest/delta-map](http://science.kqed.org/quest/delta-map). More information is available in this Stanford Report article: [news.stanford.edu/news/2012/june/changing-delta-website-061212.html](http://news.stanford.edu/news/2012/june/changing-delta-website-061212.html)

# Special Events



Tours based on the award-winning *Explore Historic Woodland* walking tour guidebook will be offered as part of the conference. Join local author and historian David Wilkinson will guide fun and educational walks through Woodland's tree-lined neighborhoods or historic downtown. The town boasts more than a century of building tradition: from elaborate Victorian Era residences, to stately commercial and public buildings, and refined Modern architectural styles—there is something for every taste.

If you are interested in a sneak peek, check out Woodland's annual historic tour event at [www.strollthroughhistory.com](http://www.strollthroughhistory.com), or the booklet itself, which is described on the city website—look for *Explore Historic Woodland* at [www.cityofwoodland.org](http://www.cityofwoodland.org).



# Lodging



## CCPH Conference Hotel

Best Western-Shadow Inn at (530) 666-1251 and request the CCPH conference rate of \$70.

Best Western-Shadow Inn, 584 N East Street Woodland, California, 95776

Reservations: (800) 669-1253

[bestwestern.com](http://bestwestern.com)

## Holiday Inn Express

2070 Freeway Drive, Woodland, CA 95776

Reservations: 1 (888) HOLIDAY; (530) 662-7750

10 minute drive from the Sacramento Airport

[www.hiexpress.com](http://www.hiexpress.com)

## Americas Best Value Inn & Suites

99 West Main Street, Woodland, CA 95695

Reservations: (888) 315-2378; (530) 662-1091

0.7 miles from Hotel Woodland

[americasbestvalueinn.com](http://americasbestvalueinn.com)



## Hampton Inn & Suites

2060 Freeway Drive, Woodland, CA 95776

(530) 662-9100

10 minute drive from the Sacramento Airport

[hamptoninn3.hilton.com](http://hamptoninn3.hilton.com)

# Arriving and Local Transportation



## By Car to the Conference Venue

The Conference venue is Historic Hotel Woodland (436 Main Street) is located in the heart of downtown Woodland and is easily accessible from several freeways. Week-days: free parking on the side streets (some 2 hour limits), and 2 hour parking in the lot behind the hotel. Week-ends: free parking behind the Hotel Woodland. See page 6 for directions to lodging at the Best Western-Shadow Inn, 584 N. East Street, Woodland, CA, 95776.

**From the Bay Area:** Take I-80 east. As you near Davis, take CA-113 north towards Woodland. After about 10 miles, take Exit 37: Main Street toward Downtown Woodland. Turn left onto East Main Street and continue to the Hotel Woodland at the southwest corner of Main and College streets.

If you'd like to take the "historic entrance" scenic route from the Bay Area: From CA-113 north take the County Road 25A exit and turn left (west). At the first stop, turn right (north) onto East Street. Lined by black walnuts and paralleling the rail line, this is the former route of Highway 113 into Woodland. After about 2.5 miles turn left onto Main Street and continue to the Hotel Woodland at the southwest corner of Main and College streets.

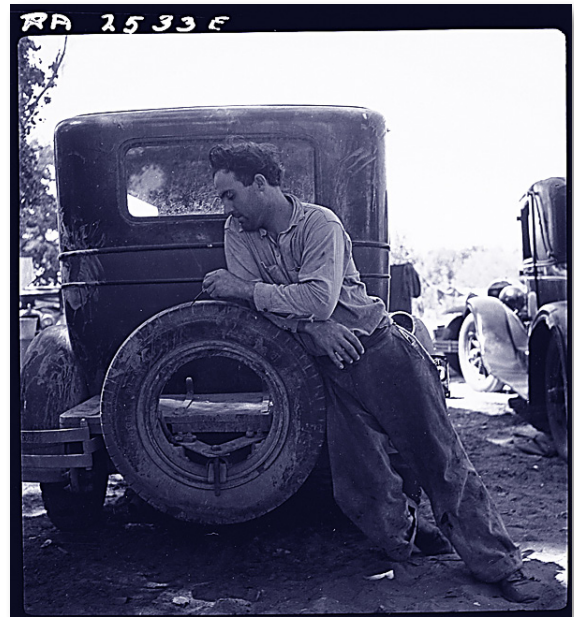


## From Northern California:

Take I-5 south and Exit 540 "West Street." Head south on West Street for about 1.5 miles and turn left (east) onto Main Street. The Hotel Woodland is at the southwest corner of Main and College streets. As its name suggests, West Street was the historic western edge of town.

## From Sacramento International Airport:

Head north on I-5 from the airport and after about 8 miles take Exit 537, Main Street. Turn left onto East Main Street. The Hotel Woodland is at the southwest corner of Main and College streets.



1935 worker & car, Marysville, CA

## By Air

The Sacramento International Airport (SMF) is the nearest full-service airport, located about 10 miles east of Woodland. Car rental facilities are located at the airport with shuttle service to the on-airport rental car agencies. Taxicab and door-to-door van shuttle service is also available curbside outside of baggage claim, either on a walk-up basis or arranged ahead of time (please note that the Best Western Shadow Inn does not provide shuttle service):

- Super Shuttle (800) 258-3826  
([www.supershuttle.com](http://www.supershuttle.com))
- Sacramento Independent Taxi Owners Assoc.  
(916) 444.0008

**Bus to/from Airport:** Yolobus ([www.yolobus.com](http://www.yolobus.com)) provides service from SMF to Woodland (Route 42B) and from Woodland to SMF (Route 42A) at the E. Main & Matmor Road stop, approximately 1 mile west of the Hotel Woodland.

# 2012 Conference Schedule

## Thursday, October 18



- 11:00 a.m.-3:00 p.m.      **CCPH Board Meeting** Best Western Shadow Inn, Woodland
- 1:00-5:00 p.m.              **Workshop: Taking History to the Streets;** Janice Kelly, Maryellen Burns, Kelly Woodward, and David Wilkinson
- 2:00-8:00 p.m.              **Registration,** Lobby of Best Western Shadow Inn, Woodland
- 5:00-8:00 p.m.              **Opening Reception** Gibson House, 512 Gibson Road, Woodland

## Friday, October 19

- 8:00 a.m.-5:00 p.m.        **Registration,** 436 Man Street, Hotel Woodland
- 8:30-10:00 a.m.            **Plenary Session: Why Don't We Do It in the Road? Curating California in Public**  
Jon Christensen, History Department & Institute of the Environment & Sustainability, UCLA  
Anthea Hartig, Executive Director, California Historical Society
- 10:15-11:45 a.m.          **Session 1: Autoclub of California Presents**  
▶ *Creating the California Road Trip: Good Roads, Open Access & Triptiks*, Tracey Panek, AAA Northern California, Nevada & Utah  
▶ *Keep Them Doggies Movin': California Tourism in the Early Automotive Age*, Morgan Yates, Corporate Archivist, Automobile Club of Southern California
- 10:15-11:45 a.m.          **Session 2: California Social Movements: Different Perspectives**  
▶ *The Prankster Antics of the Los Angeles Avant-Garde of the 1950s*, Monica Steinberg, City University of New York  
▶ *From Possibility to Reality: Community Involvement and Political Activism of Kern County Clubwomen Since 1896*, Mel Crisler, California State University, Bakersfield  
▶ *State Worker Stories: Gender and Race at the State Workplace, 1960-2005*, Janis Mickel-Szichak, California State Employee Association
- 11:45 a.m.-1:30 p.m.      **Lunch on your own** - Downtown
- 1:30-3:00 p.m.            **Session 3: Building Roads in California's Parks and Forests**  
▶ *The Civilian Conservation Corps in Yosemite National Park, 1933-1942*, Douglas Dodd, California State University, Bakersfield  
▶ *The Evolution of Recreation Roads in the Sequoia National Forest*, Aubrie Morlet, Applied EarthWorks, Inc.
- 1:30-3:00 p.m.            **Session 4: Our Journeys: The First Families, West Sacramento Historical Society**  
Terri Castaneda, April Moore, Marvin Marine, Margaret Franklin, Ilena Masetas, Martha Mills
- 3:15-4:45 p.m.            **Session 5: Conflict and Resolution in California Labor History**  
▶ *State Worker Stories: The 1972 Water Strike and the Movement for Collective*, Daniel Beagle, California State Employee Association  
▶ *Growing Conflict: The History of Agriculture in San Luis Obispo County, 1837-1937*, Doug Jenzen, Rancho Nipomo Dana Adobe, Program Director  
▶ *The Japanese Mexican Labor Association: Multicultural Solidarity in a Xenophobic Era*, Therese Lunt, California State University, Stanislaus / Modesto Junior College
- 3:15-4:45 p.m.            **Session 6: The Common Core Standards & History's Reemergence in School Curriculum**  
Pamela Tindall, Letty Kraus, & Stacey Greer, University of California, Davis
- 6:30-9:00 p.m.            **Banquet: Envisioning California's Delta As It Was: Making History Matter for the Present and Future**  
Jon Christensen, History Department & Institute of the Environment & Sustainability, UCLA



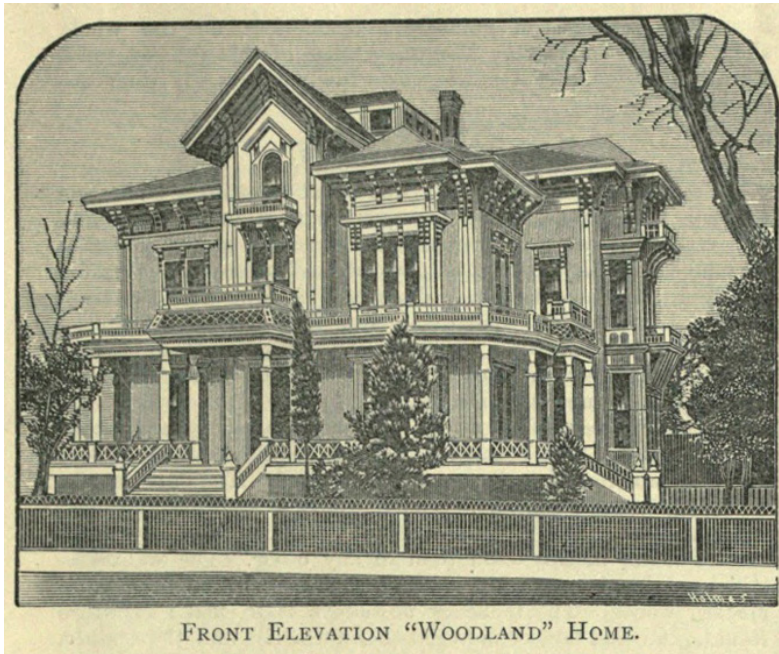
# 2012 Conference Schedule

## Saturday, October 20



- 8:00 a.m.-12:00      **Registration**, Hotel Woodland
- 8:15-9:45 a.m.      **Session 7: Pushing the Envelope: Technology Advances in California**
- ▶ “Top Secret Session,” To be announced at the conference
  - ▶ *From Sawdust to Uranium: The History of Electrical Power Generation in Humboldt County and Pacific Gas and Electric Company’s Humboldt Bay Power Plant, 1883-2015*, Garret Root, JRP Historical Consulting, LLC
- 8:15-9:45 a.m.      **Session 8: Real World Cultural Resources Situations Roundtable**
- BranDee Bruce, U.S. Bureau of Reclamation, Architectural Historian; Kathryn Haley, ICF International, Architectural Historian; Melissa Montag, U.S. Army Corps of Engineers, Historian
- 10:00-11:30 a.m.      **Session 9: Shaping the Bay Area in the 20th Century**
- ▶ *Fort Mason Army Post*, Jay Claiborne, JWC Urban Design
  - ▶ *When the Train Stops: Prohibition and the Closure of the Ocean Shore Railroad in Half Moon Bay*, Jill Bono, California State University, East Bay
- 10:00-11:30 a.m.      **Session 10: Education, Interpretation, and Memory**
- ▶ *The History of Children and Childhood and its Place in California History Museums*, Tory Inloes, UC Santa Barbara / CSU Sacramento
  - ▶ *Casa de Estudillo: A Home that Would Become a National Sensation*, Frances McMeeken, California State Parks, Old Town San Diego SHP
  - ▶ *Time of Remembrance: Japanese American Memories and Postmemories of Internment*, Leslie Trew, California State University, Sacramento
- 11:45 a.m.-1:15 p.m.      **Awards Luncheon**, Donna Harris, CCPH Awards Committee
- 1:30-3:00 p.m.      **Session 11: To California via Trains, Trails, and Ships**
- ▶ *Los Angeles Transit Planning in the 1920s*, Walter Bethel, Cal Poly, San Luis Obispo, Professor Emeritus
  - ▶ *Westward Movement to California on the Old Spanish Trail*, Paul Spitzzeri, Workman & Temple Family Homestead Museum
  - ▶ *Squeezing California: The Fate of the People’s California Steamship Company*, Dr. Nancy Taniguchi, California State University, Stanislaus, Professor Emerita
- 1:30-3:00 p.m.      **Session 12: Currents in California Water History**
- ▶ *Cachuma Project by the US Bureau of Reclamation*, Heather Norby, JRP Historical Consulting, LLC
  - ▶ *As Water Rushes By*, Jeffrey Crawford & Jessica Herrick, California State Archives
- 3:15-4:45 p.m.      **Session 13: Big Ideas: A Century of California Highways**
- ▶ *The Colossus of Roads: The California State Highway System at 100*, Greg King, Parsons Transportation Group
  - ▶ *Trans Sierra Highway*, Bob Pavlik, California Department of Transportation
- 3:15-4:45 p.m.      **Session 14: Seeking Suffrage and Syncretism**
- ▶ *Meet Sarah Severance, a Woman’s Rights Reformer on the Move*, Dick Miller, Unsupervised Historian
  - ▶ *Mary Austin: California and Christian-Native American Religious Syncretism, 1888-1934*, David Pelfrey, California State University, East Bay

# Woodland Awaits



**Gable Mansion at First and Cross streets in Woodland, California Architect & Building News (October 1887).**

Destruction of the three-story Romanesque red sandstone Farmers and Merchants Bank (1893) at Second and Main in 1970 stimulated local preservation efforts, and other Romanesque commercial buildings remain, like the former Yolo County Savings Bank (1903) at Main and College. Unfortunately, its ornamental rooftop balustrade has been removed.

Other architectural gems along Main Street include the three-story, terra cotta-clad Beaux Arts Porter Building (1913) at College Street. It gave Woodland its first elevator, steam heat, and telephones in every office. Diagonally across Main Street from the Porter Building is the Spanish Colonial Revival Hotel Woodland (1928), the site of the 2012 CCPH Conference. Notice the elaborate Chirriqueresque detailing of the central tower. The hotel was built on the site of the Byrns Hotel (1883), Woodland's first up-scale hostelry.

Still further west, at 332 Main Street, the now closed State Theater (1937) once had an elaborate neon-lit Streamline Moderne marquee. It was reluctantly removed in compliance with state highway regulations in 1966 after Main Street was widened.

Our CCPH 2012 Fall Conference highlights Woodland, the county seat and urban center of agricultural Yolo County. From the air, Woodland lives up to its nickname, the City of Trees; the canopy of foliage is bisected only by the narrow east-west line of Main Street, where the buildings define Woodland's downtown in a variety of architectural styles.

Highlights along Main Street include the Mission Revival Odd Fellows Building (1905) at Third Street; a coffee shop occupies one corner. The recently restored 1895 red-brick Woodland Opera House, now a State Park, fronts on a plaza just north of Second and Main; it reopened in 1989 after being closed since 1913. Across Main Street is the reconstructed Sacramento Northern Railway depot. Vacated after the interurban electric line ended passenger service in 1940 and torn down in the 1960s, local lawyer and architecture buff Tom Stallard faithfully recreated it from the original plans as commercial space in 1989.

To the north of Main Street and parallel to it is the curiously named Dead Cat Alley, once the site of Woodland's China town. (Doggone Alley parallels Main Street to the south.) At Third Street and Dead Cat Alley is the Electric Garage, which once serviced Studebaker electric wagons.

To the north of Dead Cat Alley is the appropriately named Court Street: the impressive Beaux Arts Yolo County Courthouse (1917) is just west of Third Street. Adjacent to the west is the new (1984) Contemporary-styled Yolo County Administration Building, with massive beam construction and a sunken atrium. Across Court Street from the Courthouse is the Spanish Revival Post Office (1936), which holds WPA-era murals on its inside walls. Its architectural style harmonizes with the former Daily Democrat Building (1925) next door. At Court and First Streets is the Mission Revival Woodland Public Library (1905), reputedly the oldest Carnegie library in California still serving its original purpose. Additions in 1905, 1915, 1927, and 1988 enlarged it while preserving its original architectural style, and a 1985 renovation added an interior courtyard. Be sure to notice the rotunda in the entry.

Further east on Court Street east of First Street is the Spanish Colonial Revival City Hall complex. The building began as a firehouse and jail in 1932 (the tower served the practical purpose of drying fire hoses). WPA funds helped add City Council Chambers and Finance Department Offices in 1936. A contemporary glass and aluminum wing added in 1961 was remodeled in 1976 to unify the complex's architectural style. The new City Hall replaced the previous fortress-like Romanesque City Hall (1892) with witches-hat turrets; sadly, it had structural problems.

Most of Woodland's industrial development has been along the railroad tracks parallel to East Street. In recent years much of this has been abandoned, though there have been attempts to recycle some of it: a former rice mill became a nest of shops and offices, though it now stands vacant, perhaps a victim of economic hard times. Preservationists relocated the former Southern Pacific depot (1911) to Sixth and Lincoln Streets, south of Main Street and still near the tracks; enthusiasts hope to restore the steam locomotive now parked in front of it. At 426 First Street is the striking Jackson Building (1891); it combines Frontier and Romanesque styling with a slate gray bullet shaped tower at one corner.

Away from Main and Court Streets, Woodland preserves an amazing collection of Victorian, Mission Revival, Tudor Revival and Craftsman homes and churches, many of them lovingly restored.

The City of Woodland's Historical Preservation Commission publishes a beautifully illustrated 296-page walking-tour guidebook, *Explore Historic Woodland*, packed with detailed explanations of diverse architectural styles and histories of over 400 buildings and the people who lived in them or used them.

A recipient of the 2008 California Governor's Historic Preservation Award for excellence in increasing public awareness, appreciation and support for historic preservation throughout the City of Woodland, this guidebook provides readers with a fun and educational way to experience Woodland's tree-lined neighborhoods, filled with historic houses from the 1860s to the 1940s. Woodland has been called a "museum of housing styles" united by historic Downtown Woodland, listed on the Register of Historic Places.

The "Explore Historic Woodland" walking tour guidebook contains information on:

- Ten different walking tours covering a total of 7.5 miles, including a Downtown and Victorian Tour
- Easy to navigate maps of each walking tour
- A historical overview of Woodland
- A glossary of architectural styles and terms
- Over 400 buildings representing classic American Architectural styles
- Detailed historic and architectural descriptions and photos of each site

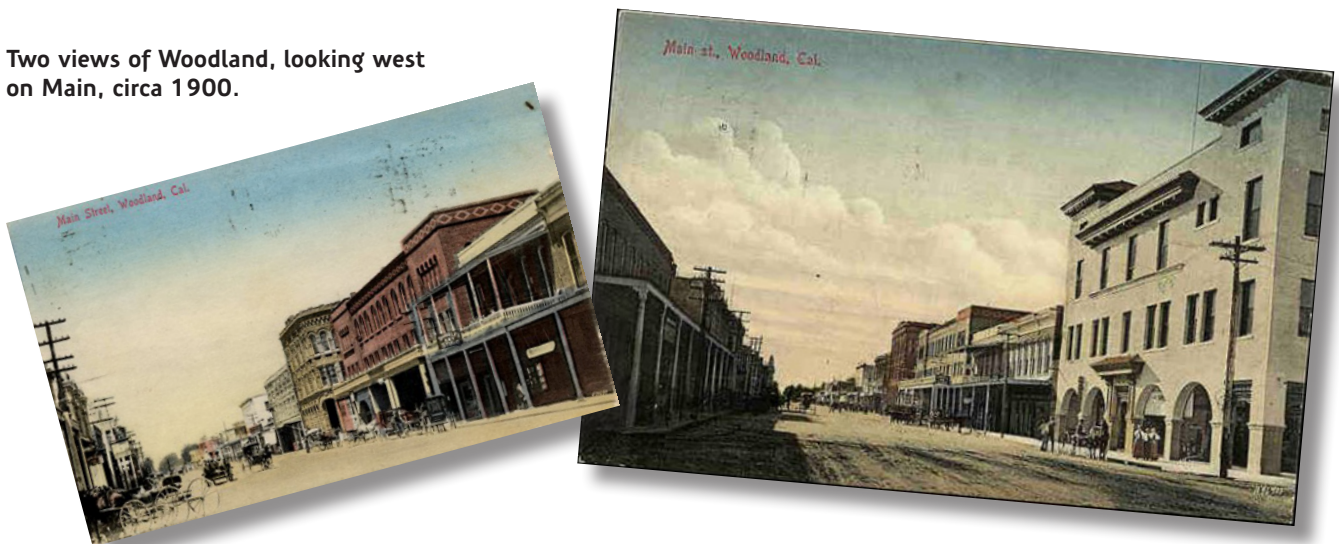
You may purchase your copy of the *Explore Historic Woodland* walking tour guidebook for \$15 at the following locations:

- City Hall Annex - 520 Court Street
- Chamber of Commerce - 307 First Street
- The House Dresser - 617 Main Street
- Nugget Market - 157 Main Street

For more information about the book and tours visit the registration desk at the conference.

- Walt Bethel, CHA Editor

**Two views of Woodland, looking west on Main, circa 1900.**



# Things to do in Woodland



## Heidrick Agricultural History Center, Antique Tractors & Trucks

The Heidrick Antique Tractor Museum includes giant steam-powered traction engines, early Caterpillar tractors that could work the boggy delta lowlands without miring in the soft soil, combines, harvesters, and a blacksmith shop. The adjoining Hayes Antique Truck Museum includes military trucks, a section of the old (1916-1926) plank road, an old gas station and garage, and a diner, along with a wide range of early vehicles. Each museum traces vehicles and agricultural equipment of the past and each showcases the mechanical genius of our forefathers. Take the road 102 exit from Interstate 5 and continue west along Hays Lane, or take Main Street east under I-5, turn south on Road 102, then right onto Hays Lane. The Museum is at the end of the lane.

1962 Hays Lane, Woodland, CA, 95776; Wednesday–Sunday, 10am to 5pm. Last admission one hour before closing. Tickets range from \$5 to \$8, under 5 for free; [www.ahistory.org](http://www.ahistory.org).



## Reiff's Antique Garage & Gas Station, a unique Woodland house museum

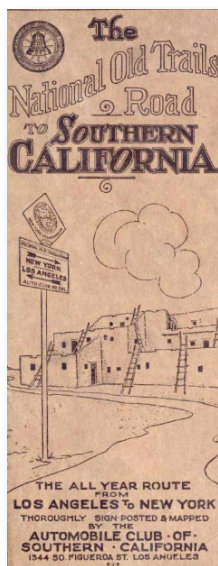
Visiting Reiff's Antique Garage & Gas Station is a great way to step back into the old time car culture of the 1950s and 1960s. Tours are by appointment: Contact Mark Reiff or call 530-666-1758 to schedule your tour at Reiff's Old Time Gas Station Automotive Museum, 52 Jefferson St. Tours \$7 per person, donation requested. [www.reiffsgasstation.com](http://www.reiffsgasstation.com)

## Woodland Opera House

Built in 1885, the original Opera House burned down in the 1892 fire that destroyed much of downtown Woodland. It was rebuilt on the same site, using some of the remaining foundations and bricks from the walls, and it reopened in 1896. Over 300 touring companies appeared on its stage by 1913, when the combined effects of the popularity of motion pictures and a lawsuit over an injury closed the Opera House and it remained boarded up until 1971. The Yolo County Historical Society purchased the building in 1971 and got it listed on the National

Register of Historic Places to ensure that it did not fall to the wrecking ball and bulldozer. It was designated California State Historic Landmark #851 in 1973 and a state historical park in 1976. The Historical Society gave

the property to the State of California in 1980, and in 1981 the restoration began. It reopened in January of 1989 after a seven-year, \$2,000,000+ restoration project. For the first time in nearly eight decades, the venerable brick building in the heart of California's fertile Sacramento Valley began to offer live entertainment on a year-round basis. During the weekend of the conference, the Opera House will be featuring "Pinkalicious, the Musical" based on the popular children's book by Victoria Kann and Elizabeth Kann. It opens October 19, and information about tickets can be found: [www.woodlandoperahouse.org/Pages/default.aspx](http://www.woodlandoperahouse.org/Pages/default.aspx)



**Tours and Tourism in the 1910s: California auto club road maps and railroad promotions. (Internet Archive, [archive.org](http://archive.org)).**

California Council for the Promotion of History  
**2012 Conference Registration**

October 18–20, Woodland, California

Name \_\_\_\_\_ Title \_\_\_\_\_

Affiliation \_\_\_\_\_

Address \_\_\_\_\_

City \_\_\_\_\_ State \_\_\_\_\_ ZIP Code \_\_\_\_\_

Telephone \_\_\_\_\_ Email \_\_\_\_\_

This is my first CCPH conference.

Please use one registration form per primary conference registrant, and include spouse/partner registration and special activities guest tickets on the same form as the primary registrant.

Registration (Select appropriate fee)		Through September 30	After September 30
Full Conference	Individual (Member/Non-Member)	<input type="radio"/> \$115 / <input type="radio"/> \$155	<input type="radio"/> \$135 / <input type="radio"/> \$175
	Student (Member/Non-Member)	<input type="radio"/> \$55 / <input type="radio"/> \$65	<input type="radio"/> \$75 / <input type="radio"/> \$85
Single Day	Individual (Member/Non-Member)	<input type="radio"/> \$70 / <input type="radio"/> \$85	<input type="radio"/> \$85 / <input type="radio"/> \$95
	Student (Member/Non-Member)	<input type="radio"/> \$35 / <input type="radio"/> \$40	<input type="radio"/> \$50 / <input type="radio"/> \$55
	Check day of attendance	<input type="checkbox"/> Friday, October 19	<input type="checkbox"/> Saturday, October 20
Guest (attending tours or events, but not sessions)	Name _____	<input type="radio"/> \$65	<input type="radio"/> \$80
<b>Registration Total</b>			<b>\$</b>

Events (Check appropriate fee)	Registrant	Guest
<b>Workshop:</b> Neighborhood Histories and Local Advocacy	<input type="checkbox"/> \$40	<input type="checkbox"/> \$40
<b>Opening reception</b> (Thursday evening)	<b>Included</b> <input type="checkbox"/> Check if attending	<input type="checkbox"/> \$10
<b>Woodland Opera House Tour</b> (Thursday afternoon)	<b>Included</b> <input type="checkbox"/> Check if attending	<b>Included</b> <input type="checkbox"/> Check if attending
<b>Walking Tour of Woodland</b>	<b>Included</b> <input type="checkbox"/> Check if attending	<b>Included</b>
<b>Annual Banquet</b> (Friday at Hotel Woodland; buffet style)	<input type="checkbox"/> \$39	<input type="checkbox"/> \$39
<b>Awards Luncheon</b> (Saturday) at Hotel Woodland (buffet style with vegetarian options)	<input type="checkbox"/> \$30	<input type="checkbox"/> \$30
<b>Events Total</b>		<b>\$</b>

Details and payment information on reverse.

## What's included?

Full conference registration fees include the program sessions, the opening reception, and tours. Additional fees apply to the workshop, annual banquet, and awards luncheon.

## I can only attend for one day. What does that include?

One-day registration fees include attendance at program sessions on the selected day. The opening reception on Thursday evening is included if registering for Friday, October 19, as are the tours scheduled on the selected day.

## My spouse/partner wants to come, too. How do we register for different events?

- \* Guests are individuals who wish to attend the workshop, the opening reception, the tour, the annual banquet, and/or the awards luncheon with a registrant, but who do not wish to attend conference sessions.
- \* Guest registration fee includes sessions and tours for days of registration. Separate tickets can be purchased for guests who wish to attend Thursday's opening reception (\$10).
- \* Guest tickets for special activities will be included in the primary registrant's conference packet.

## How can I get reduced or complimentary registration?

- \* Students may obtain the reduced student rate by providing documentation of current student status. Please be sure to indicate the school you are attending under "Affiliation" in the Contact Information section.
- \* There is a limited opportunity to receive complimentary conference registration in exchange for volunteering at least 4 hours during the conference. To take advantage of this offer, write the word "Volunteer" in the "Total" box on this page and the next. You will be contacted by the volunteer coordinator prior to the conference to schedule a date and time for your volunteer service.

## How do I participate in the workshop only?

Use the registration form, check the box for the workshop, and mail in the form and fee as soon as possible.

Registration Total	\$
Events Total	\$
Membership (attach form)	\$
<b>TOTAL</b>	\$

---

---

### Payment

---

---

- Enclosed is a check payable to CCPH in the amount of \$ \_\_\_\_\_
- Please charge my credit card in the amount of \$ \_\_\_\_\_  
Account # \_\_\_\_\_  Visa  MasterCard  
Name (as it appears on card) \_\_\_\_\_  
Expiration Date \_\_\_\_\_ Signature \_\_\_\_\_

If you prefer, call our office at 1 (916) 798-5099 to register.

Send completed registration form, membership form (if applicable), and check to:

CCPH Conference 2011  
Department of History / CSU Sacramento  
6000 J Street  
Sacramento CA 95819-6059

Thank you!

California Council for the Promotion of History

Membership Application and Renewal

2012 Annual Meeting Special Offer

In conjunction with the conference in Woodland, CCPH is offering residents of Yolo and neighboring counties a half-price, one-year membership with conference registration. Those who are new to CCPH and are residents of Colusa, Sutter, Sacramento, Solano, Napa, and Lake counties qualify.

If you are eligible for this offer, write in the name of your county here: \_\_\_\_\_.

Memberships started or renewed at the 2012 annual meeting will be good through December 2013.

Contact Information

Provide your contact information as you wish it to appear in the CCPH membership directory. (Use the check box below to have your mailing address excluded from the directory. Other contact information, phone/fax/email, will be included.)

Name \_\_\_\_\_ Title \_\_\_\_\_

Affiliation \_\_\_\_\_

Address \_\_\_\_\_

City \_\_\_\_\_ State \_\_\_\_\_ ZIP Code \_\_\_\_\_

Telephone \_\_\_\_\_ Email \_\_\_\_\_

This address is my  Home address  Affiliation address

I do not wish to have my address listed in the CCPH Membership Directory.

Category

- Patron \$105, Colleague \$80, Corporate \$105, Institutional \$50, Student \$20, Individual \$40, Senior: \$25

Amount enclosed \$ \_\_\_\_\_

Fields of Historical Interest and Activity (please select up to three):

- CRM/Archaeology, Community/Local History, Archives/Records Management, CRM/Historical, Agency/Corporate History, Editing and Publishing, Academic-based History, Oral History, Curation/Conservation, Public History Education, Volunteer Management, Interpretation/Living History, Independent Scholar, Museum/Agency Management, Other

Area of Employment (please select up to two):

- Local Government, State Government, Federal Government, Historical Society/Foundation, Other, Historical/Archaeological Consulting, Other Consulting, Other Private Business/Firm, Elementary/Secondary Education, University of California, California State University, Other College/University, Community College



## Thanks to Our Conference Sponsors and Partners

California Office of Historic Preservation  
JRP Historical Consulting, LLC  
Gibson House / Yolo County Historical Museum  
Sacramento Valley Historical Railways  
Woodland Opera House State Historic Park

Thanks also to the CCPH local arrangements and program committee: Meta Bunse, Chandra Miller, and Bryan Larson, and to Katy Haun for graphic design.

The activity which is the subject of this program has been financed in part with Federal funds from the National Park Service, Department of the Interior, through the California Office of Historic Preservation. However, the contents and opinions do not necessarily reflect the views or policies of the Department of the Interior or the California Office of Historic Preservation, nor does mention of trade names or commercial products constitute endorsement or recommendation by the Department of the Interior or the California Office of Historic Preservation.

This program receives Federal financial assistance for identification and protection of historic properties. Under

Title VI of the Civil Rights Act of 1964, Section 504 of the Rehabilitation Act of 1973, and the Age Discrimination Act of 1975, as amended, the U.S. Department of the Interior prohibits discrimination on the basis of race, color, national origin, disability, or age in its federally assisted programs. If you believe you have been discriminated against in any program, activity, or facility as described above, or if you desire further information, please write to:

Office of Equal Opportunity  
National Park Service  
1849 C Street, N.W.  
Washington, D.C. 20240

LOBBY VIEW OF HOTEL WOODLAND, WOODLAND, CALIF.

1785-29

California Council for the Promotion of History  
California State University, Sacramento  
Department of History  
6000 J Street  
Sacramento CA 95819-6059